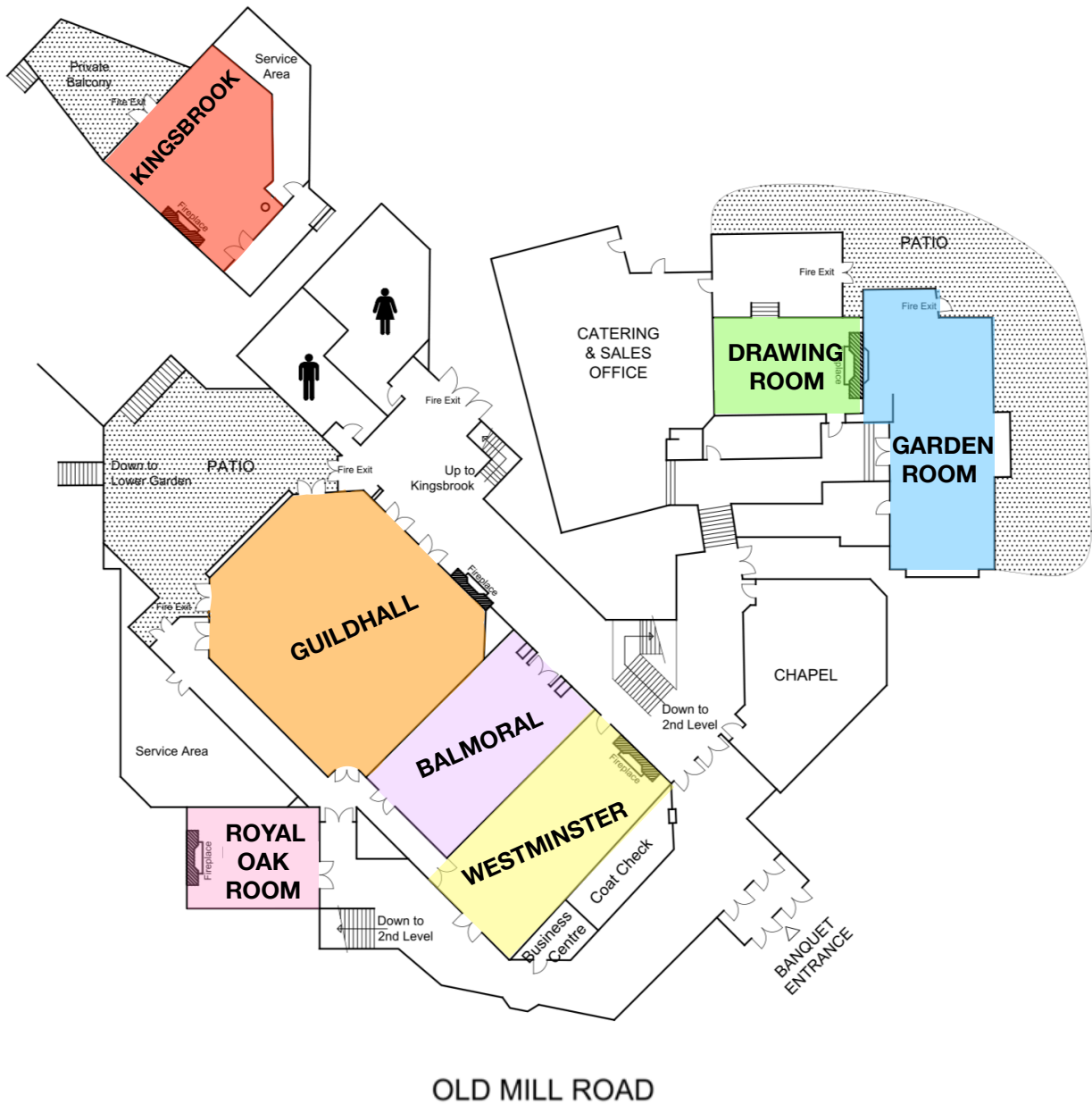




OLD MILL
TORONTO EST. 1914

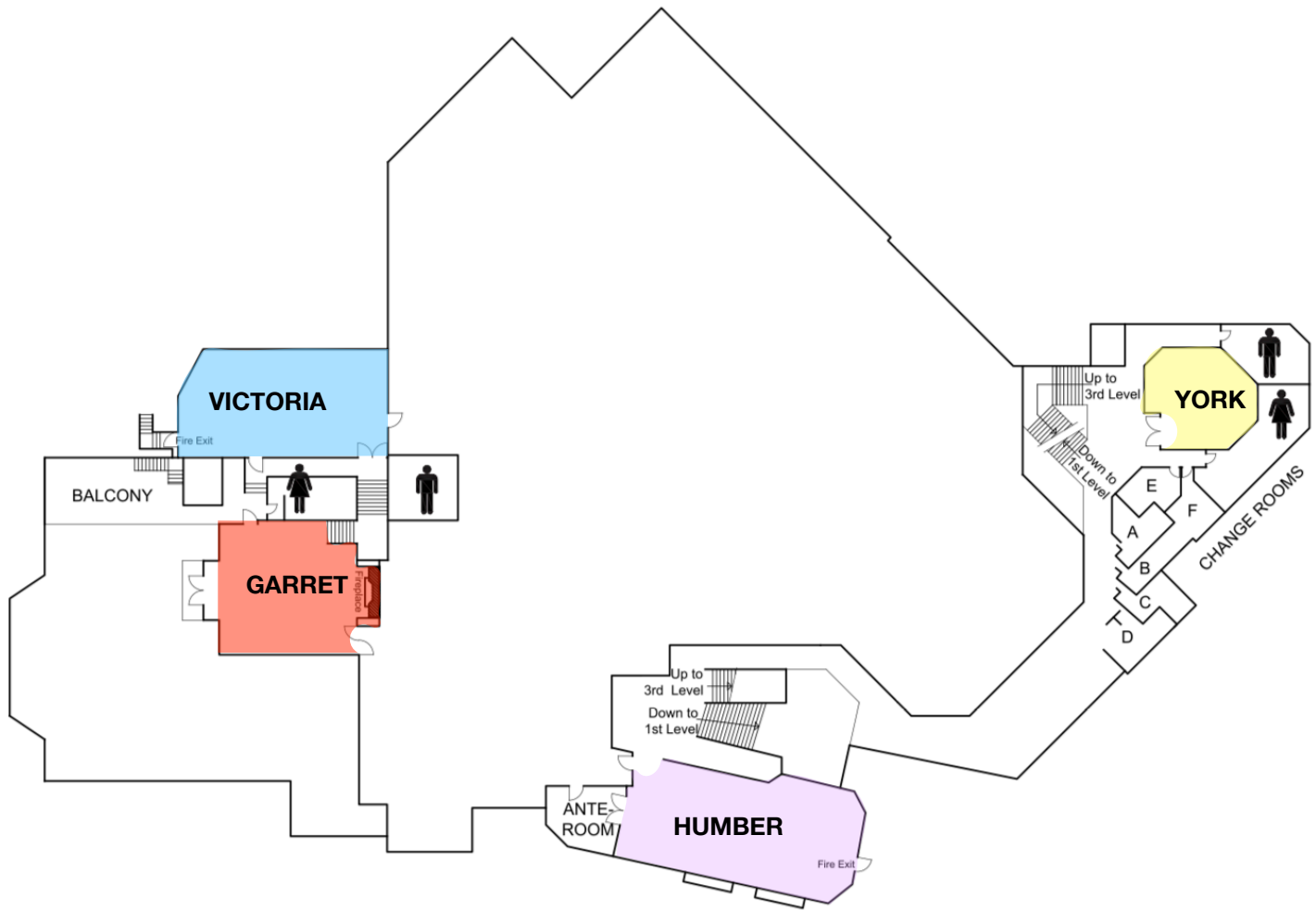
Floor Plans & Specifications
Weddings & Socials

3RD FLOOR SPECIFICATIONS



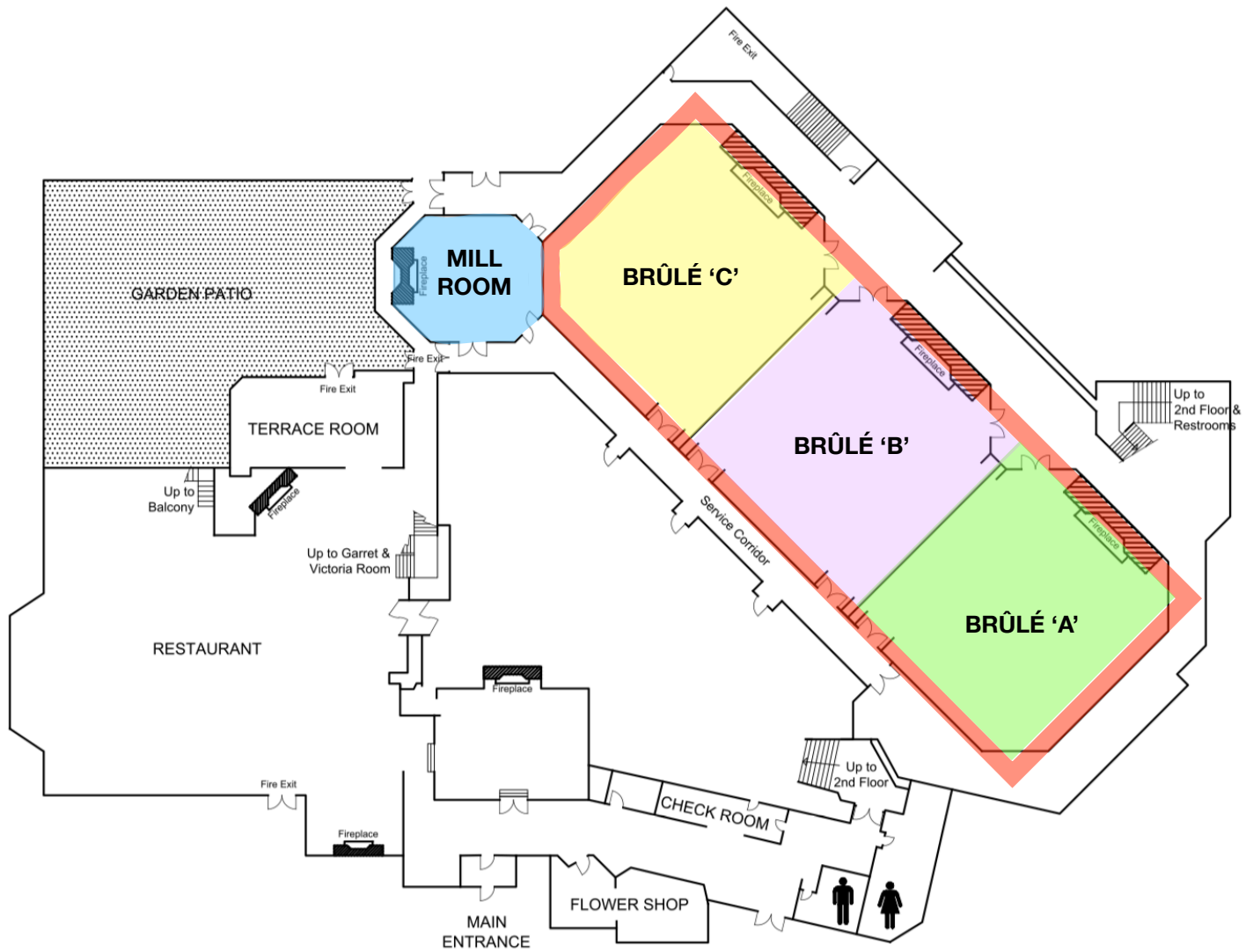
ROOM	Dimension in Feet	Ceiling Height	Square Footage	Banquet Style Min.	Banquet Style Max.	Buffet Style Max.	Reception Style Max.	Max. with Charger plates	Theatre Style Max.
ROYAL OAK ROOM	17x30	9' 10"	510	10	16	—	—	16	—
GARDEN ROOM	18x48	11'	877	25	54	42	74	36	48
DRAWING ROOM	24x30	8' 6"	748	20	28	28	63	24	—
WESTMINSTER	28x54	14'	1528	80	100	80	129	80	129
BALMORAL	29x46	14'	1347	60	80	70	114	64	114
GUILDHALL	53x53	14'	2852	120	180	160	241	144	241
KINGSBROOK	12x34	9' 1"	764	25	40	40	64	32	50

2ND FLOOR SPECIFICATIONS



ROOM	Dimension in Feet	Ceiling Height	Square Footage	Banquet Style Min.	Banquet Style Max.	Buffet Style Max.	Reception Style Max.	Max. with Charger plates	Theatre Style Max.
GARRET	29x31	11' 10"	913	45	60	—	77	48	50
HUMBER	25x57	10'	1473	50	90	90	124	72	120
YORK	21x24	8' to centre 9' 8"	516	15	40	30	44	32	40
VICTORIA	20x40	9' 7"	865	40	65	45	73	52	64

1ST FLOOR SPECIFICATIONS



OLD MILL ROAD

ROOM	Dimension in Feet	Ceiling Height	Square Footage	Banquet Style Min.	Banquet Style Max.	Buffet Style Max.	Reception Style Max.	Max. with Charger plates	Theatre Style Max.
BRÛLÉ 'A'	51x54	9' 10" 10 centre 13'	2785	90	180	160	240	144	240
BRÛLÉ 'B'	52 x 54	9' 10" 10 centre 13'	2836	90	160	140	240	128	240
BRÛLÉ 'C'	51x54	9' 10" 10 centre 13'	2785	90	180	160	240	144	240
BRÛLÉ 'A, B, C'	154 x 54	9' 10" 10 centre 13'	8406	270	450	400	720	440	720
MILL ROOM	26 X 27	7' 10" to centre 8' 11"	703	25	45	45	59	40	59